

# CHURCH OF THE REDEEMER

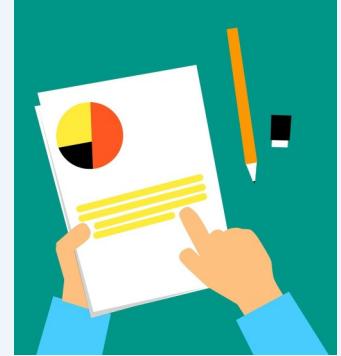
Eblast

January 9, 2025



## Annual Meeting

Our Annual Meeting will be January 26th. Please have your **annual reports** in by no later than **January 13th**. This will allow plenty of time for proofing, editing, and production. Thank you!



**Degreening of the Church** will take **THIS SUNDAY**, January 12. We would much appreciate your help, as you know many hands make light work.

## Family Fun Night

The next game night is on Friday night, January 17th from 6 - 8 p.m. in the South Wing of St. John. Come and enjoy one of many games or bring one of your favorites. We all need some fun and laughter. Hoping everyone puts it on their calendar for a fun time and joins us (bring your friends along with you; they may thank you later).



The next Blood drive being hosted by St. John will be on Friday, Jan. 24th in the South Wing from 12 p.m. - 4:30 p.m.

## Readings for January 11 & 12th

Lessons: Isaiah 43:1-7, Psalm 29, Acts 8:14-17, Luke 3:15-17, 21-22

### Scripture Reflection

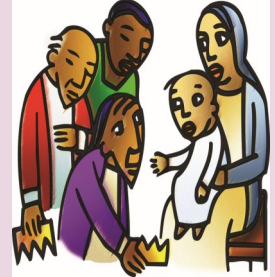
#### Reflection for January 11 & 12

How may I live in the power of the Holy Spirit this day?

What in my life is like chaff that the Holy Spirit burns away in order for me to live as a free and faithful child of God?

Because Epiphany (the arrival of the Wise Men) was on Monday, we'll miss celebrating it on Sunday. Consider:

In Epiphany when the magi make their great journey to see the Christ Child, we see Jesus drawing all creation to the divine life revealed in him, and we see the realization of God's dream of reconciled creation. In our own way, we are each endowed by the Spirit with unique and precious gifts for sharing God's healing love in a good but often divided world. What spiritual practices do you engage in that allow you to stay peaceful, courteous, and develop a respectful regard for difference? How do you stay present and create openness for finding, revealing, and activating God's reconciling love in the world?



### **This Sunday we welcome into the Household of God Aurora Ann Kerrick.**

Aurora's parents are Gabby Matolka and Mitchell Kerrick. Aurora will be bringing with her approximately 80 of her family members to see Aurora baptized. Let's give them a warm welcome.

### **Serving in Worship at Redeemer**

**Jan. 12**

**Readers:** Margaret Cole

**Usher:** Bob Cole

**Greeter:** Margaret Cole

**Acolyte**

**Jan. 19**

Amy Murrelle

Glenn Murrelle

Linda Murrelle

Kayla Marshall



After Degreening of the Church, Youth Group will meet in the Parlor.

### **Food Pantry Item of the Month**

"We hope you had a holiday full of all the things that are special to you. While the holidays are over, **the need for food for those less fortunate in our community remains** and maybe even more so in the cold winter months. Please consider helping both the Valley Food Pantry and Feed My Sheep ministries by donating CEREAL this month. Items can be placed in the cart in the church or on the table in the atrium. Also, you can always bring ANY food items (not just the item designated for the month) as any foods will help! Bless you!



"The Wildcat closet continues to collect donations of Sweat pants, Sweat shirts, socks and toiletries. The box is located in the atrium . Linda Murrelle will pick up your donations and make sure they are delivered to the proper locations.

# SAYRE BOROUGH NEWS

## WINTER 2025



### HOWARD ELMER PARK BANDSTAND ROOF PROJECT

The Howard Elmer Park Bandstand is one of the oldest structures in the Borough. Constructed in 1886, the bandstand serves as a gathering place for not just residents of Sayre Borough and the Greater Valley community and it has hosted hundreds of events over the years including the summer concert series, weddings, memorial services, and as the backdrop for wedding photos, prom photos, and graduation photos. The \$119,000.00 project that includes the installation of a new copper roof was awarded to Mac Builders. The project is funded by donations and Borough funds and as of the end of December, more than \$97,000.00 has been

donated in support of the project thanks to the Guthrie, Bradford County, First Citizens Community Bank, Endless Mountains Heritage Region, & Expanded Energy. Local donations from the community can be made by check or on line via Square <https://square.link/u/K2vRIwzM>. All donations will be earmarked for roof project and future improvements.



Scott Hayes

It's that time of year again, when icy weather and snowstorms can result in a Snow Emergency being declared in the Borough. A Snow Emergency automatically goes into effect in Sayre Borough when the National Weather Service issues a Winter Storm Warning for our area and stays in full effect until the warning expires. During a Snow Emergency, parking is prohibited on all

posted Snow Emergency Routes and vehicles can be ticketed and/or towed. Keeping the roads clear of parked cars helps the plow truck drivers do a better job and do it quicker.

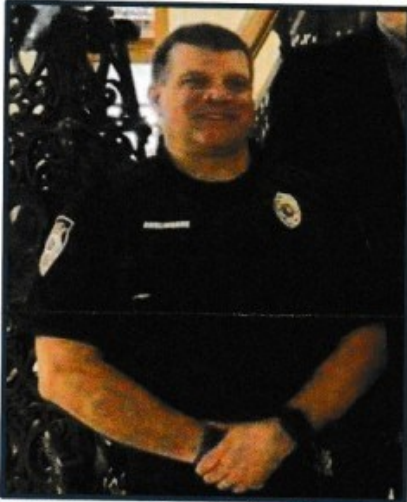
### SNOW REMOVAL REMINDER

Winter weather is here and residents are reminded that all snow/ice and sleet must be cleared from Borough properties no later than 24 hours after each accumulation occurs. The 24- hour time period shall begin after the weather occurrence ends. Violators will receive notice to clear their sidewalks, and may be subject to fines and cleanup costs. Shovel snow away from fire hydrants and crosswalks, and if you can check in on a neighbor to see if they need some help clearing their sidewalks. Contact information for registered snow removal contractors is available from the Code Enforcement Office.

[www.sayreborough.org](http://www.sayreborough.org)

# SAYRE BOROUGH NEWS

## WINTER 2025



### THREE DECADES OF DEDICATION

On February 28, 2025, Patrol Officer Steven Burlingame will patrol the streets in Sayre Borough and South Waverly Borough for the last time of his 30 year career. Prior to working for the Borough, Officer Burlingame worked as a police officer in Florida, and as a Bradford County Sheriff Deputy. During his career in Sayre, Officer Burlingame was assigned as the Department's traffic accident investigator, D.A.R.E Officer in the Sayre Area School District and the Epiphany School, and as the Department's School Resource Officer for the last two years assigned to the Sayre Area School District. In 2024, Officer Burlingame participated in the Police Unity Tour with other

members of the Police Department bicycling from New Jersey to Washington, D.C. to raise awareness for Law Enforcement Officers who have died in the line of duty. The Borough Council and Mayor Farley extend their best wishes for a well-deserved retirement.



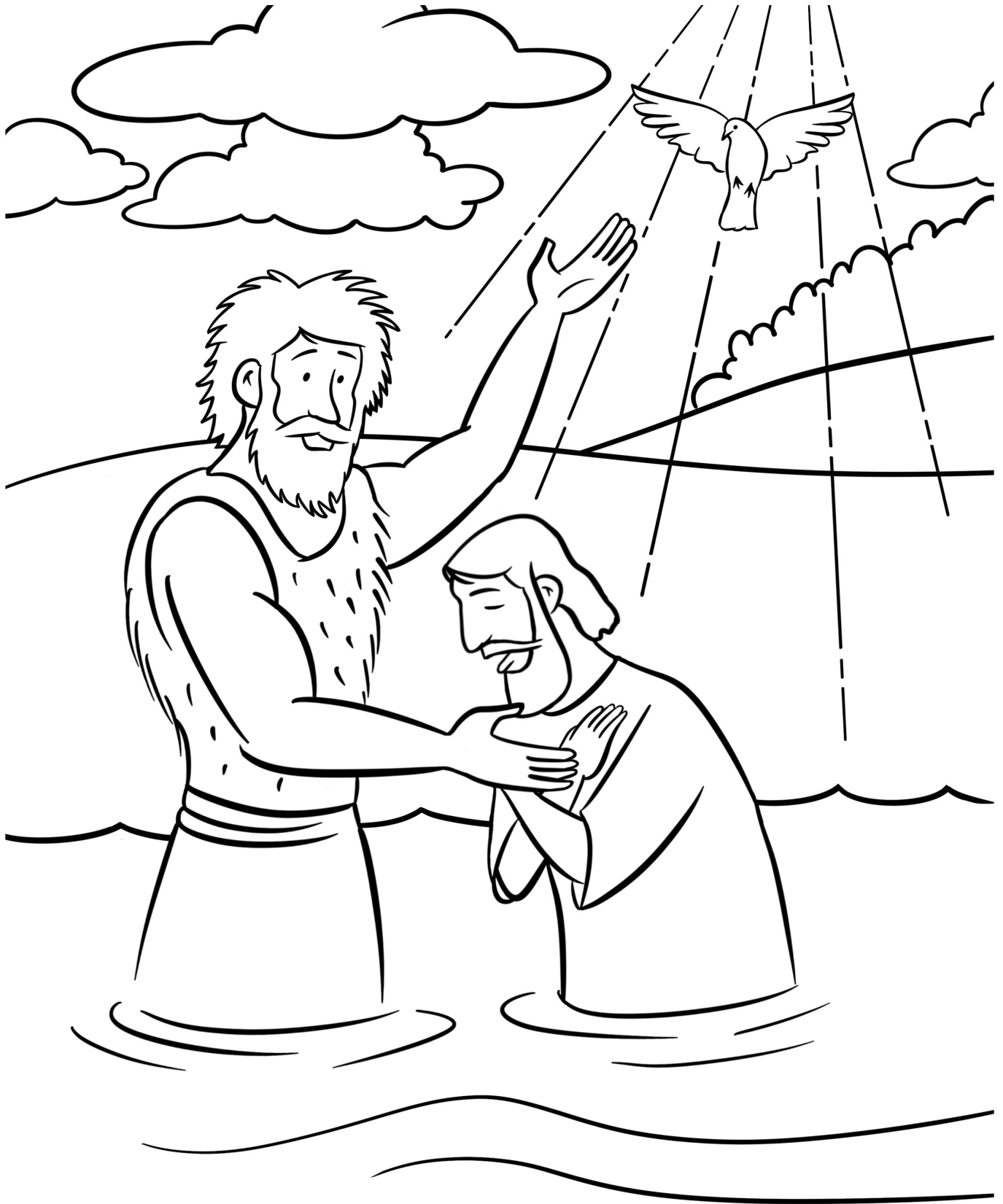
### WINTER RECYCLING CENTER HOURS

The South Thomas Avenue Drop-Off Center will begin winter hours on Wednesday, January 3<sup>rd</sup> and continue through March 31, 2024. The Center's winter hours will be Wednesdays between 4:00pm and 7:00pm and Saturdays between 8:00am and 12:00pm. Items taken at the drop-off center include cardboard, newspaper, glass (clear/blue/brown/green), magazines, junk mail, plastic bottles, and Christmas trees. Check our Facebook page during winter storms for updated information about the Center's hours and changes to the curbside collection schedule for the Borough.



Borough residents & business owners who are interested in receiving and paying their quarterly sewer bill electronically can do so with the Borough's online billing system managed by MuniLink and Invoice Cloud. They provides property owners with real time online access to their account(s). If you are interested in receiving your bill electronically and/or paying your bill online with a credit card, you can set up an online account on the Borough's website [www.sayreborough.org](http://www.sayreborough.org). In person payments are always accepted at the Borough Hall during normal business hours or dropped off at the office in the secure drop-box located outside at the rear entrance of the Borough Hall.

[www.sayreborough.org](http://www.sayreborough.org)



Copyright ©Sermons4Kids | All Rights Reserved | [www.sermons4kids.com](http://www.sermons4kids.com)

John the Baptist baptizes Jesus.

# Jesus, the One and Only

---

Complete the sentences by filling in the blanks with the correct words from the word bank at the bottom of the page. You can check your answers in Luke 3:15-16, 21-22 (NIV)



## John the Baptist Baptizes Jesus

The people were waiting expectantly and were all wondering in their hearts if John might possibly be the \_\_\_\_\_. John answered them all, "I baptize you with \_\_\_\_\_. But one more powerful than I will come, the things of whose \_\_\_\_\_ I am not worthy to untie. He will baptize you with the Holy \_\_\_\_\_ and with \_\_\_\_\_.

When all the people were being baptized, \_\_\_\_\_ was baptized too. And as he was \_\_\_\_\_, heaven was opened and the Holy Spirit descended on him in bodily form like a \_\_\_\_\_. And a voice came from heaven: "You are my \_\_\_\_\_, whom I \_\_\_\_\_; with you I am well pleased."

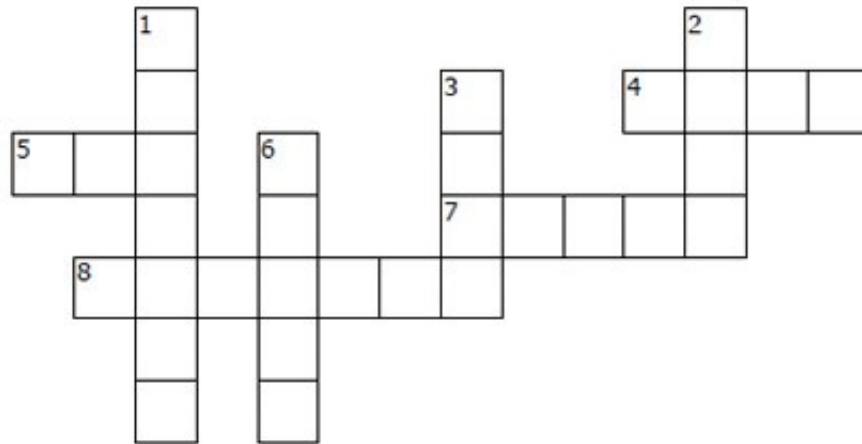
Luke 3:15-16, 21-22 (NIV)

praying	Spirit	water	Son	Jesus
dove	love	fire	sandals	Christ

# Jesus, the One and Only

And a voice came from heaven: "You are my Son, whom I love; with you I am well pleased." Luke 3:22b (NIV)

Based on Luke 3:15-17, 21-22



## ACROSS

4. The name of the man who baptized Jesus
5. A male offspring
7. The sound produced by vibration of the human vocal cords
8. To cover briefly completely in water or pour water over a person's head

## DOWN

1. A shoe consisting of a sole fastened to the foot by straps
2. A deep feeling of affection for a person
3. A bird often used as a symbol of peace
6. Clear, colorless, odorless, tasteless liquid; H<sub>2</sub>O

SON  
LOVE

DOVE  
JOHN

BAPTIZE  
WATER

SANDALS  
VOICE